

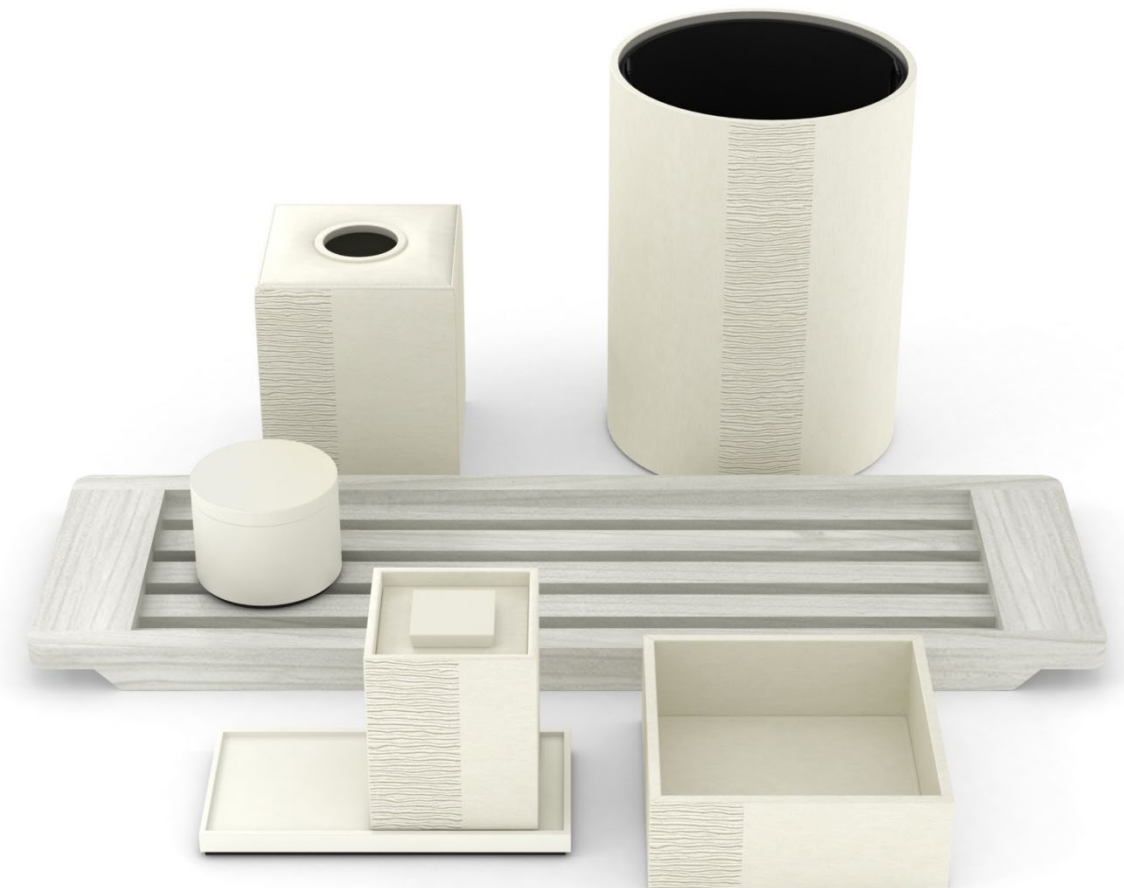
Guest Room



Fairmont Breakers: Suites



Guest Bath





Fairmont Breakers: Standard Rooms



Guest Bath



Guest Room





Mandarin Oriental Savoy, Zurich

Working with the property's design team, we created 40+ custom accessories for this exquisite property. Varying design by room type, we imagined and incorporated bespoke, yet nuanced detailing to ensure every piece was intimately connected to its space and artfully designed for seamless functionality.



Bath Accessories: Guest Rooms



Bath Accessories: Suites



Guest Room: Bedside and Desk



Guest Room: Minibar



Guest Room: Foyer and Closet



Conference Areas



Guest Room

Our Gray Metallic Wave Textured Leather Match finish is warm and rustic, seamlessly melding into the design scheme and lending additional touches of casual elegance. Special and unexpected pieces, like the closet organizer and welcome card holder, surprise and delight guests and reflect Montage's commitment to impeccable hospitality and exceptional luxury.



Guest Bathroom

Our bath caddies are hand-crafted from solid-wood, customized to the specs of the tub (for a perfect fit) and offered in a range of wood tones and forms. Earthy and luxurious at the same time, they are substantial and distinctive, tempting weary skiers to indulge in the gorgeous marble tubs, and elevating the guest bath experience in a meaningful way.



Montage Deer Valley

As Montage's accessories partner, we develop two collections for this spectacular, five-star property whose gorgeous interiors are inspired by the heritage and natural beauty of the region.





Pendry Newport Beach

With stunning spaces that feel both considered and casual in the same breath, Pendry Newport Beach has a style that's equal parts Deco-inspired elegance and laid-back California cool. We worked with the design team to develop bespoke accessories across guestrooms, guest bathrooms, F&B and public areas.



Guest Bathroom

Our Pearl White Wave Textured Leather Match accessories are elegant, neutral and clean. With our signature modern forms and exquisite craftsmanship, these pieces lend touches of modern luxury to the guest bathroom.



Guest Room

Pendry chose our Black Wave Textured Leather Match Cube Recycling Bin. Black Wave Textured Leather Match is one of our many Quick Ship collections, stocked at our warehouse in California. Our Evolution Luggage Racks, crafted from solid wood, is available in a variety of tones, including the Black shown below.



Pool Area Dining

Our stacking food service trays and carrier allows for easy and elegant delivery of poolside meals and snacks. The Plaited Polyweave finish is well suited for moisture, humidity and the outdoor environment while the custom green trim evokes the lush scenery, cabanas and accents interspersed throughout the property's interior design.



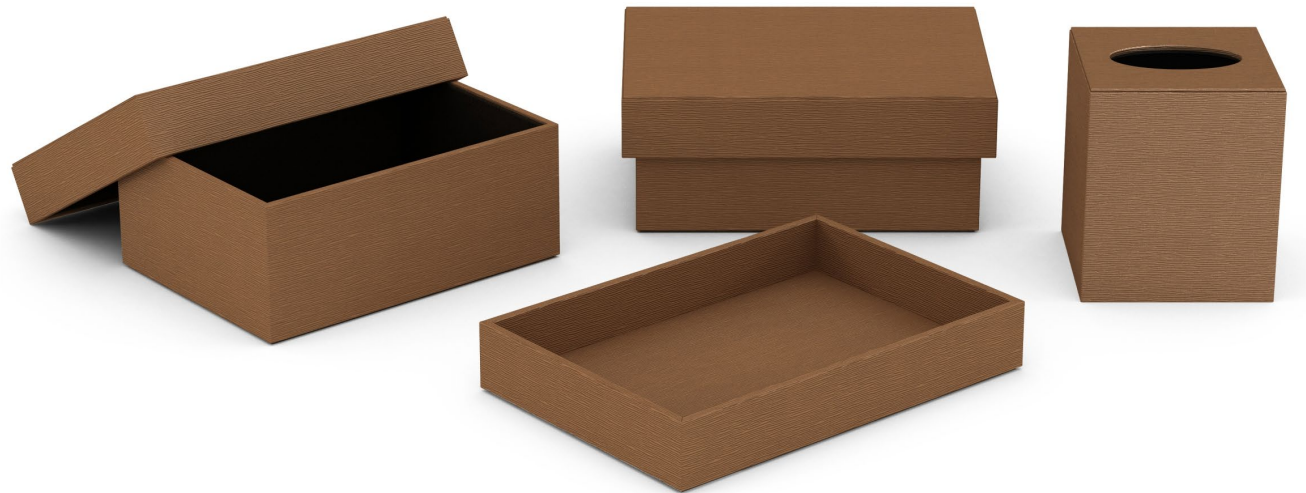
Pool Area

Our custom capabilities at our company-owned factory in Indonesia are extensive, allowing us to create pieces such as these bamboo sunscreen boxes, which elevate Pendry's poolside experience and leave lasting impressions in the minds of guests. Thoughtful and unexpected touches make all the difference!



Public Restrooms

Our Caramel Wave Textured Leather Match accessories blend seamlessly into the coastal-inspired Spa Pendry and public area restrooms, striking just the right balance of simplicity and sophistication. We offer a range of sleek modern forms and are able to adjust dimensions to ensure that each piece fits and functions perfectly in its space. Our pedal bins are available in all of our woven or leather match finishes, allowing them to function as intentional accents in the design story.



Four Seasons Hotel Atlanta



Four Seasons Hotel Atlanta boasts gorgeously outfitted, marble bathrooms, each of which features a luxurious, deep, soaking tub and a separate glass enclosed shower. The clean design, contrasting tones and subtle texture of our Wave Textured Leather Match bath accessories add to the modern elegance of these stunning spaces.



Raffles Boston



The inimitable ambience of Raffles Boston reflects the brand's singular intuition for subtle elegance and exquisite detailing. With sleek forms and impeccable styling, our White Lacquer bath accessories are the perfect touchpoints of understated luxury to further elevate the sumptuous guest bath experience.



Waldorf Astoria, Orlando

Bright and spacious, the newly refreshed guestrooms and suites exude warmth and sophistication, offering an artful blend of comfort and modern elegance with luxe touches, such as our hand-crafted accessories throughout.



Guestroom: Minibar

Our Gray Chevron Mendong is crafted from sustainably grown and harvested Mendong grass, which is hand-loomed with stainless steel filaments into a chevron pattern. We love how the warm tone, intricate patterning and rich textures interact with and evoke the other design elements in the space.



Finish Swatch



Guest Bath

Sleek and modern, our Lacquer finish is available in any Pantone, Sherwin Williams or Benjamin Moore color reference in both gloss and matte options. White Lacquer is just one of our many neutral and elegant Quick Ship collections (stocked at our warehouse in California).



Guestroom: Luggage Rack

The property also chose our gorgeous Evolution Luggage Rack (crafted from solid wood) in Natural, one of our six signature wood tones.





Princess Cruises, The Sun Princess

We worked with The design team at Princess Cruises to create custom accessories for each room category, from standard staterooms to Sky Suites. Hand-crafted in a variety of leather match finishes and neutral tones, these pieces are fresh and modern, lux touches that complement their spaces, elevate the in-room experience and leave lasting impressions in the minds of guests.

Minibar



Suites



Mini Suites

Suites: Coffee Setup



Bath Accessories



Towel Basket



Other Suite Accessories



Luggage Rack





Fairmont Hotel Macdonald, Edmonton

We collaborated with the property's design team to create accessories for the newly imagined guestrooms and suites at Fairmont Hotel Macdonald. Elegant and sophisticated, each piece was thoughtfully conceived to complement the dignified style and timeless grace of this historic property.



Guestroom and Guest Bath Accessories

These custom-colored, Smooth Leather Match accessories feature sleek forms and exquisite, yet understated, styling that contributes to the refined and luxurious sensibility of the space. Our custom capabilities are extensive with regard to form and finish, including our ability to match any Pantone, Sherwin Williams, or Benjamin Moore color reference.





Four Seasons Cabo del Sol

We created this collection of one-of-a-kind accessories (artifacts?) for this gorgeous, modern, hacienda-style property on the stunning southern coast of Mexico's Baja peninsula. Inspired by the Mexican chic and cool Mediterranean vibe, these pieces connect intimately with their spaces – tiny details which have immense impact... consistency at every immaculate touch point is the pinnacle of luxury.



Four Seasons Cabo del Sol

Our Resin Wine Bucket with Wood Stand is a show-stopper. Casually rustic with an organic sensibility, this special piece is one of those touches that elevates the whole experience...

The hand-cast resin vessel is available in a wide range of tones and textures, and includes a removable, stainless steel liner that eliminates condensation. The wood stand is available in a variety of wood tones.





Mii Amo, Sedona

Our “Terra Cotta” matte resin and lacquer collection, created to honor Mii Amo’s intimate connection to its spectacular surroundings among the red rocks of Sedona’s Boynton Canyon, reflects the resort’s unique spin on understated elegance and rustic luxury.



Guest Bath



Our hand-cast Resin and Lacquer finishes are available in any Pantone, Benjamin Moore or Sherwin Williams color reference with a variety of textural and sheen options. The wood ice bucket is available in a variety of wood tones

Guest Room





The Ritz-Carlton Yacht Collection, *Evrima*

We worked with The Ritz-Carlton Yacht Collection team over 2 years to design custom accessories with a sleek, modern feel in mixed textures and muted earth tones. With every single detail conceived to enhance the guest experience, this intimate and luxurious yacht is as much a destination as the ports it visits.



Minibar



Living Area





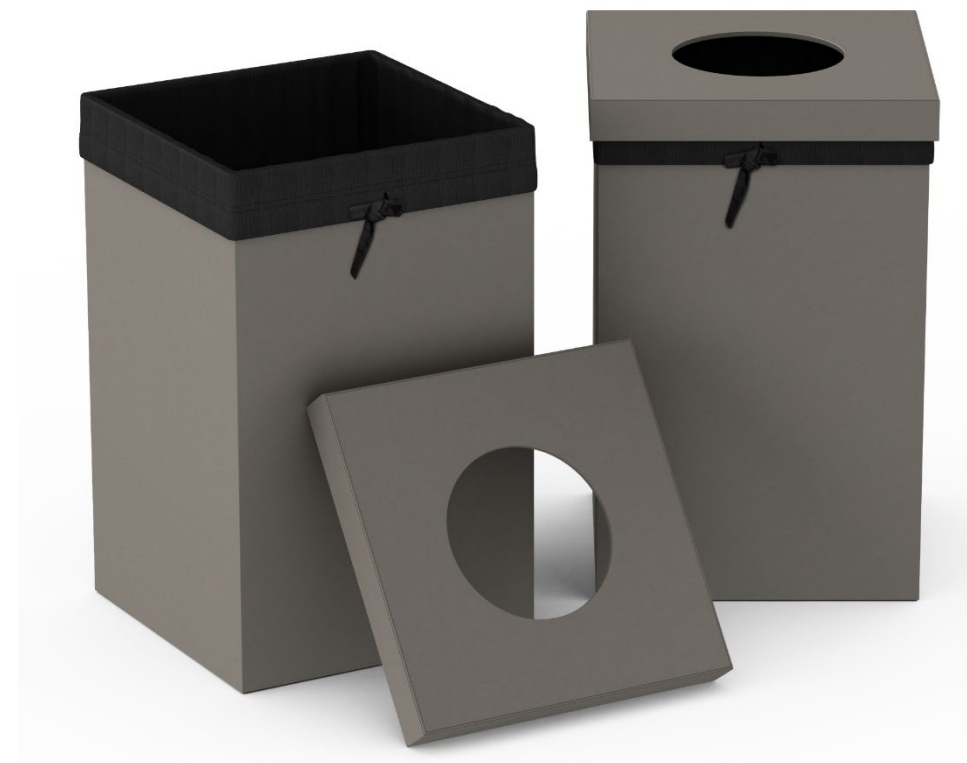
Guest Bathroom



Laundry Return Box



Hamper





Pool and Spa



The Ritz-Carlton Yacht Collection, *Evrima*





Mandarin Oriental Palace, Luzern

Working with the GM and his team, we designed over 50+ custom accessories for this exquisite property. Varying design by room type, we imagined and incorporated bespoke yet nuanced detailing to ensure every single piece was truly one-of-a-kind and intimately connected to its space.



Guest Bathroom



Guest Room: Desk Area



Guest Room: Bedside



Guest Room: Foyer and Closet Area



Guest Room: Minibar



Guest Room: Sitting Area





Renaissance Honolulu Hotel & Spa

We worked with the property's interior designer to create elegant bath and room accessories in soft neutral tones with impeccable detailing for this urban resort that is part of the Sky Ala Moana mixed use development.



Guest Bath

Our Pearl White Embroidered Leather Match accessories are elegant and clean with a pearlized sheen that catches the light and adds dimension. With our signature modern forms and exquisite craftsmanship, these pieces truly elevate the guest bath.



Guest Room

Embroidered Leather Match is available in a variety of colors, including Gray Metallic, as shown below in the Cube Wastebasket. Our Evolution Luggage Rack, meticulously hand-crafted from solid wood, impresses guests right off the bat as they unpack and settle in... first impressions set the tone for the whole stay!





Loews Arlington Hotel

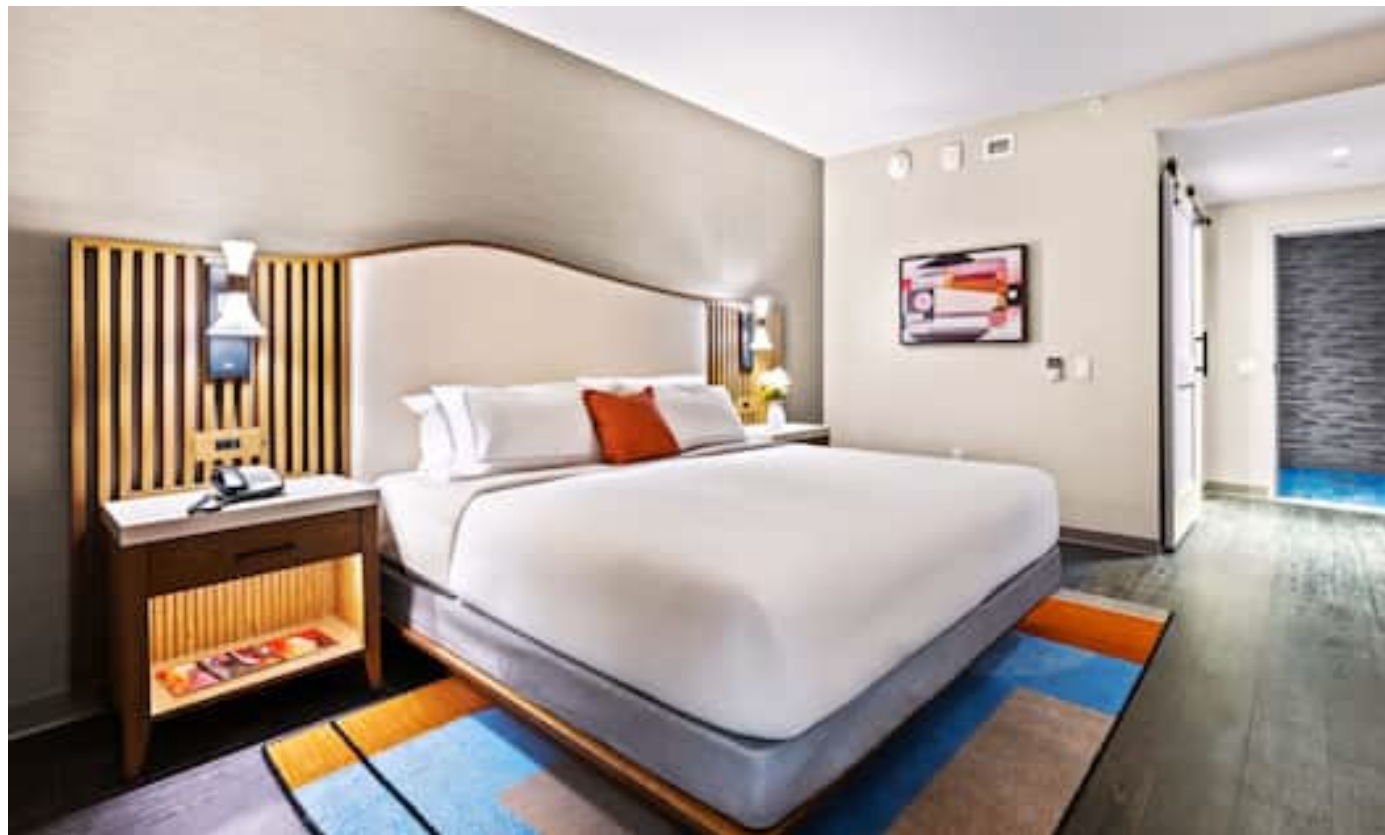
Offering upscale hospitality and unparalleled service, Loews Arlington Hotel features 888 guest rooms and luxury suites with a sophisticated and forward thinking design. This Texas-sized meeting and resort destination features our Classic Weave Leather Match guestroom and guest bath accessories.



Guest Bath and Guest Room

Richly textured with a pearlized sheen, our Silver Classic Weave Leather Match accessories lend touches of warmth, elegance and sophistication to the spacious and luxurious guestrooms. This unique woven finish is crafted from Smooth Leather Match, which the skilled artisans at our company-owned factory cut into thin strips and then hand loom into this classic pattern. The hand-cast, silver resin soap dish coordinates seamlessly and is available in a variety of shapes.





Lively Hotel on Oak (Tapestry Collection)

We worked with the interior designer for this boutique hotel to create chic, elegant guestroom and guest bath accessories in neutral tones, with textural elements that lend warmth and dimension to the vibrant, modern spaces.

Guest Room

Our Ivory Jumbo Woven Embossed Leather Match is a soft, neutral, synthetic material with an embossed basket-weave pattern. We created a wood lid for the ice bucket to reflect the case goods and wood accents in the guestroom, a thoughtful and exquisite detail that charms guests and leaves lasting impressions.



Guest Bathroom

The team paired the Jumbo Woven Embossed Leather Match wastebasket and tissue cover with our wood resin soap dish and coaster for the countertop white pump dispenser. Matte Black wall mount and pump dispensers were created for the shower to match the plumbing fixtures.





Grand Hyatt Atlanta, Buckhead

The design team chose our through-body resin accessories in a custom Pantone with a matte finish for this luxurious downtown Buckhead hotel.



Guest Bath Accessories

Sleek, modern and weighty-in-feel, our hand-cast resin bath accessories elevate the guest bath experience and impress with exquisite craftsmanship and impeccable detailing. We craft our resin accessories in a variety of textures, including Opaque (as shown below), “Sand” and “Glass,” and have the ability to match any Pantone, Sherwin Williams or Benjamin Moore color reference. These same accessories were also installed at Grand Hyatt Washington DC.



Guest Room and Guest Bath Accessories

The team chose to curate across various finishes to create a unique collection that evokes the beauty and serenity of the beach surroundings. Our Pearl White Classic Woven Leather Match pieces shimmer with pearlescence, reminiscent of sand sparkling in the sun, while the custom-colored Blue “Glass Resin” soap dish evokes the shimmering, aquamarine waters of the Atlantic Ocean. The Teak tray, with its rich color and beautiful grain, lends a contrasting tone and organic touch to complete the set.



Tideline Palm Beach Ocean Resort and Spa

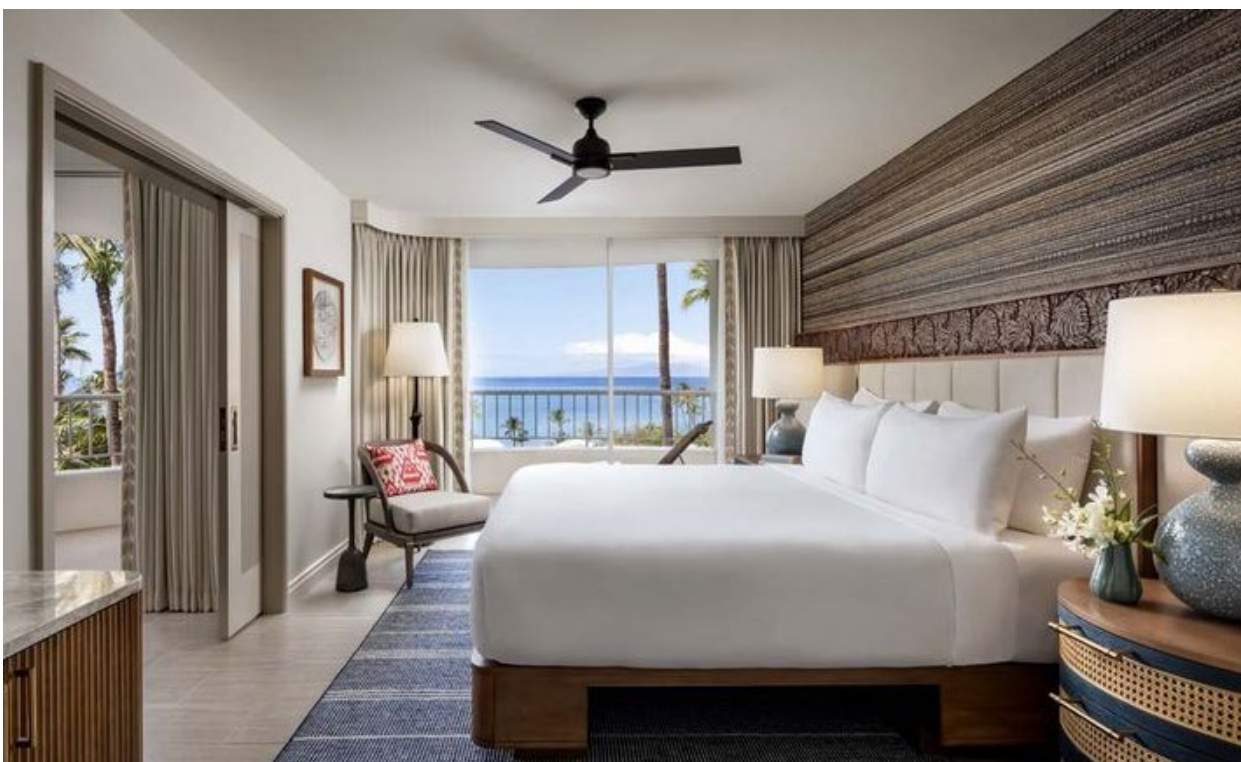
We worked with the design team to create guestroom and guest bath accessories with a coastal, contemporary and luxe feel for boutique, ocean-front property.





Fairmont Kea Lani

We worked with the property team to develop accessories for the newly imagined, all-suite accommodations at the Fairmont Kea Lani. Tropical, breezy, and casually luxurious, the design team blended elements of the island's rich cultural heritage and lush surroundings with artful touches of modern elegance, like our signature White Lacquer accessories.



Guest Bath



Our Lacquer finish is available in any Pantone, Sherwin Williams or Benjamin Moore color reference in both gloss and matte options. Part of our Quick Ship program, White Lacquer accessories are stocked at our warehouse in California.

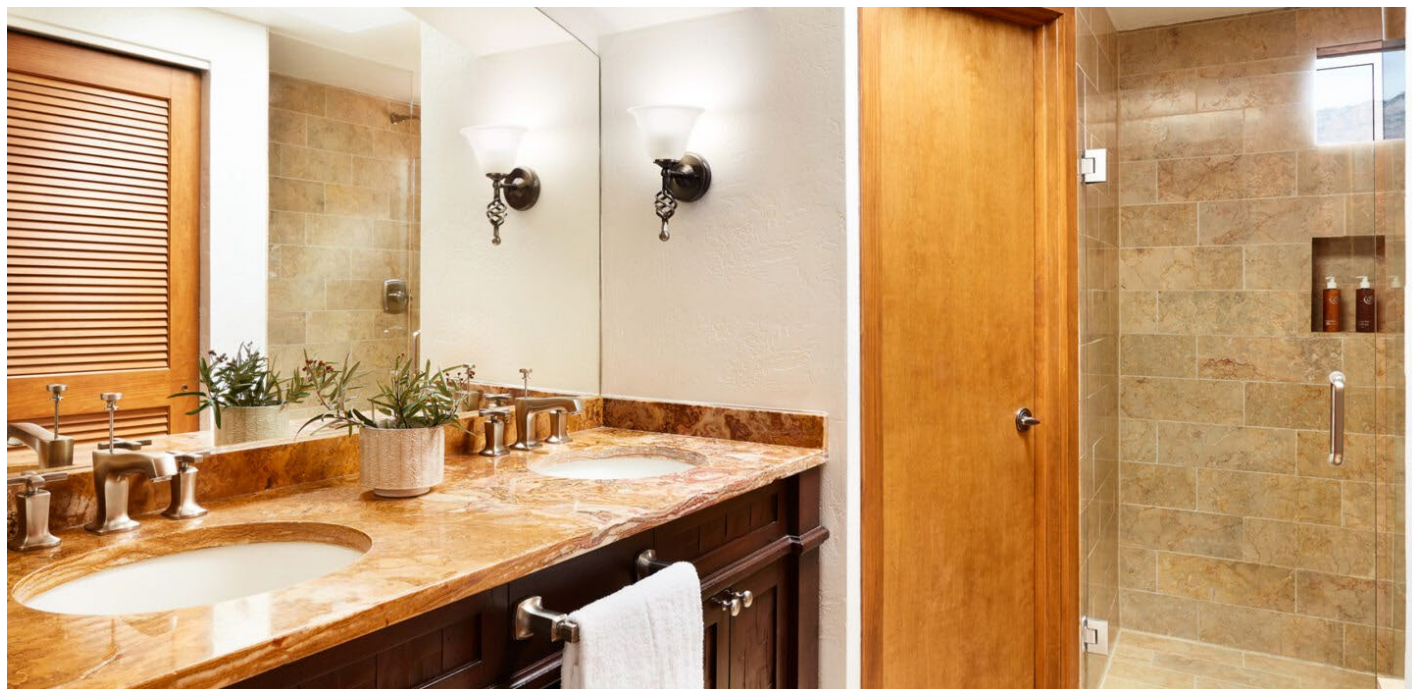
Guest Room





Enchantment Resort

Gorgeously secluded amid the spectacular red rocks of Boynton Canyon, Enchantment is cozy, elegant and intimately connected to its surroundings. Inspired by its minimalist architecture and the rich earth tones of its industrial chic interiors, we developed this collection of sleek, modern forms in a variety of Java Matte finishes.



Guest Bath

Our hand cast Matte Resin has an earthy, stone-like sensibility (and heft) that lends a rustic, yet luxurious touch. Our Resin and Lacquer finishes are available in any Pantone, Benjamin Moore or Sherwin Williams color reference.



Guest Room

Our Smooth Leather Match contributes a touch of warmth and a softer sensibility to Enchantment's Southwestern inspired casitas and suites. While color and form evoke the guest bath accessories, we love the textural contrast these pieces lend to the collection.





Montage Big Sky

To complement the property's modern mountain design and timeless palette of regional woods and stones, we created custom guest room and bath accessories in natural wood, black sand resin and leather match, blending a variety of unique and earthy textures and tones.



Guest Bath

Bath accessories were crafted from a variety of materials, including natural wood, black sand resin and our proprietary woven wave textured leather match.



Guest Room

We explored a variety of finishes with Montage before developing this distressed, saddle leather match, so perfectly suited to the character of this boutique property .



Four Seasons Fort Lauderdale: Spa

White-washed Sungkai accessories, perfectly sized for their spaces, lend warm, elegant touches to this spa dressing room. Every single detail, from the configuration of the compartments on the amenity caddy to the brass tone of the pump dispenser nozzles to the font used for labelling on the bins, is thoughtfully and artfully conceived. The substantial weight of Via Motif Resin ensures that guest impressions of impeccable quality and world-class luxury are confirmed with every interaction.



Four Seasons Fort Lauderdale: Lobby

Topaz Broadweave Leather Match fits seamlessly into the sophisticated modern stylings of the lobby areas, lending texture and warmth to the space. Amber Gloss Resin accents, inspired by old-fashioned apothecary jars, complement the topaz and brass elements while offering a rich point of contrast against the pristine white marble.



Four Seasons Fort Lauderdale: Pool Area

Our stacking food service trays and carrier allows for easy and elegant delivery of poolside meals and snacks. Our Plaited Polyweave finish is well suited for the moist, outdoor environment while the vibrant blue trim evokes the pool umbrellas and chaise lounges as well as the sparkling ocean waters just steps away.



Our Ivory Plaited Polyweave bins/hampers and Beach Sand Resin accessories add elegant, organic touches to the gorgeous pool area. The soft, natural hues and unique textures call to mind the spectacular surroundings and youthful spirit and energy of the property.





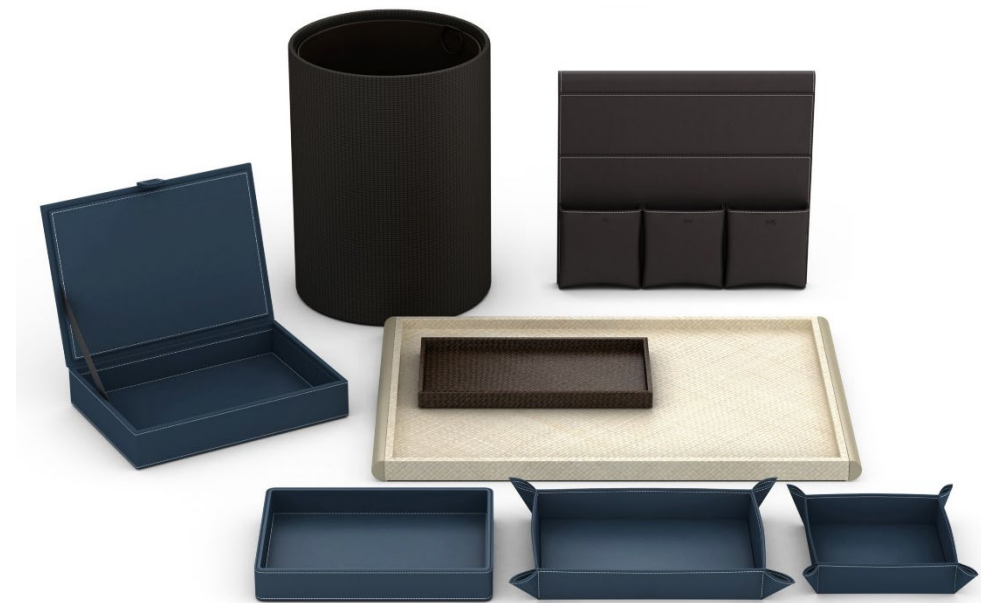
Rosewood Le Guanahani, St. Barth

We created guest room and guest bath accessories for this charming property hidden away on its own private peninsula. The clean lines, soft tones and casual elegance of our pieces contribute to the laid back, yet luxurious, vibe that this island gem has perfected.



Guest Room

Mixing materials, tones and textures contributes to the property's one-of-a-kind sensibility and further evokes the island spirit. We designed custom forms to allow these accessories a perfect fit in their spaces and created the nightstand organizer to elegantly house the remotes for the tv, fan and a/c. The vibrant blue Pantone is the property's signature hue.



Guest Bath

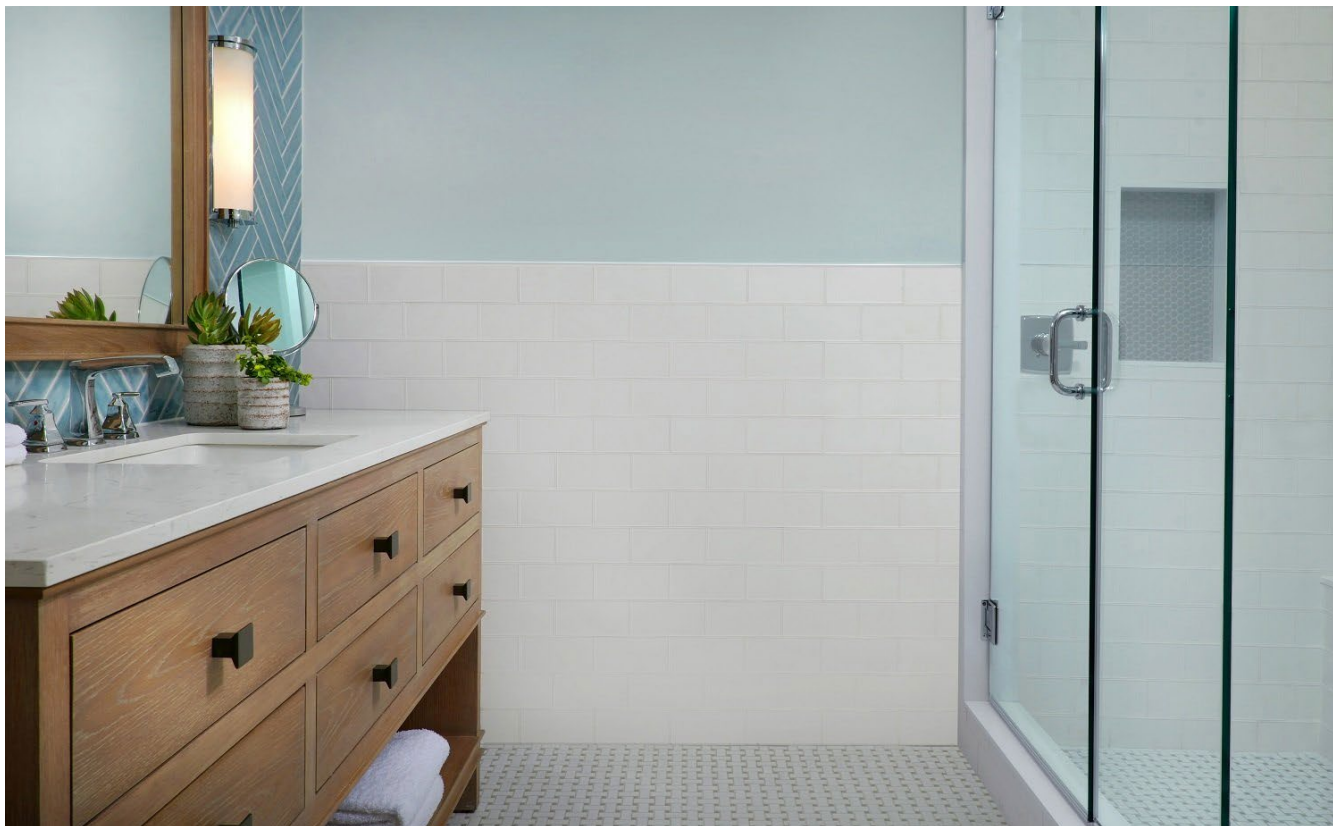
Our Natural Pandan is crafted from the Pandan leaf, a completely renewable resource indigenous to Indonesia. In addition to being a beautiful, sustainable finish, it offers incredible design flexibility (available in almost any color) and value.





Southernmost Beach Resort, Key West

We collaborated with the property's designers to create this fresh, breezy collection with a contemporary, coastal sensibility. The warm sand tones, muted blue accents, and organic textures of our pieces reflect the ombre patterns of the Atlantic ocean and contribute a sense of harmony with the resort's idyllic surroundings.



Guest Room and Guest Bath Accessories

Our Natural Mendong, with wood accents and custom-colored leather match trim, has a beachy, organic and casually luxurious vibe. Mendong is crafted from Mendong grass, which is sustainably grown and harvested, and then hand-loomed by the skilled artisans at our company-owned factory in Indonesia.





Hilton Okinawa Miyako Island Resort

The interiors of this spectacular new property celebrate the island's unique culture and natural beauty, incorporating design elements inspired by the Miyako Blue Sea and its surroundings. Bespoke touches, such as locally sourced artwork and our hand-crafted guest room and bath accessories, contribute to the refined and luxurious ambience.



Guest Room and Guest Bath Accessories

Our richly-textured, Broadweave, Gray-Metallic Leather Match lends a warm, earthy contrast to the beachy, nature-inspired interiors. This proprietary finish, crafted by the skilled artisans at our company-owned factory in Indonesia, features exquisite detailing, including a meticulously woven, broadweave pattern, pearlized sheen and hand-stitched trim.



Guest Bath and Guest Room

Our **luggage racks** are hand crafted from solid wood and available in a variety of wood tones. Clean lines, elegant forms and impeccable craftsmanship elevate the guests' unpacking experience and contribute to the modern, luxurious vibe of the space.

Our **Gray Faux Shagreen** is a two-tone Leather Match Finish featuring a pebbled texture reminiscent of stingray skin. Effortlessly chic, Faux Shagreen offers incredible design flexibility as it is available in a wide range of colors including single and two-tone options.

The **square soap dish** is crafted from our full-body hand-cast resin



The Godfrey Detroit (Curio Collection)

Tailored and timeless, the guestrooms at The Godfrey Detroit are inspired by the rich local diversity and industrial aesthetics of the area's restoration spirit. Intentional, bespoke touches, including our hand-crafted accessories, lend reflectivity and dimension, contributing to Godfrey's unique take on urban luxury and sophistication.





Hard Rock New York

Hard Rock New York celebrates the vibrant rhythm of the city, with floor to ceiling windows, elegantly appointed guestrooms and unique musical touches. Our Faux Shagreen Leather Match and hand cast Resin accessories are sleek, sophisticated, modern and edgy, in keeping with Hard Rock's unique spirit, confidence and style.



Guest Room

Our Champagne Faux Shagreen finish lends a soft, neutral tone that blends seamlessly into the guest room décor, with gold flecked that can't help but catch the eye.



Guest Bath

Our hand cast resin is available in any color and design, including artful combinations imagined by the skilled artisans at our own factory in Indonesia.





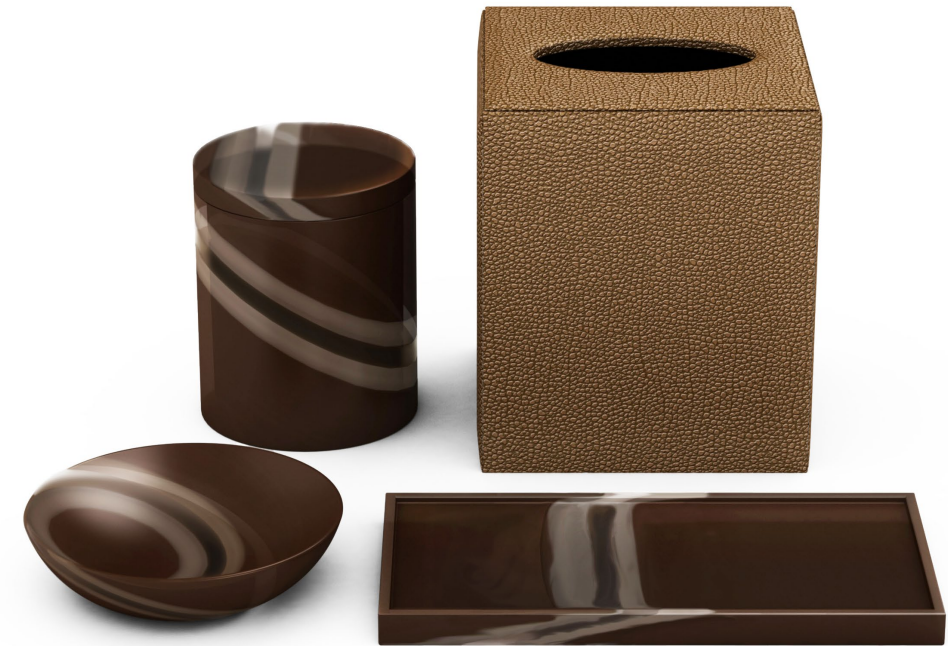
Hard Rock Marbella

Hard Rock Marbella blends modern design with a hint of rebellion, along with subtle nods to the 1960 style that defined Costa del Sol. Our Faux Shagreen Leather Match and hand cast Resin accessories are sleek, sophisticated, modern and edgy, in keeping with Hard Rock's unique spirit, confidence and style.



Guest Bath

We developed "Buffalo Horn" Resin specifically for Hard Rock Marbella, inspired by the eye glass frames of a Corporate Design team member.



Guest Room

This custom Copper Faux Shagreen Finish complements the celebration of color in the guest rooms.





The Ritz-Carlton, Amelia Island

Drawing on the breathtaking coastal beauty and southern charm of this iconic property, we worked with the management team to design accessories inspired by the surrounding landscape in hue, texture and pattern.



Guest Bath

The soft neutral hues of our custom, two-toned Faux Shagreen finish evokes the sand and sea. We customized forms to ensure perfect fit and optimal function.



Guest Room

In addition to guest room accessories in our Faux Shagreen finish, we also handcrafted beautiful wood luggage racks, notable for their clean elegance and exquisite (contract) quality.



Guest Bath

The woven Java Pandan pieces are hand crafted from the leaf of the same name, indigenous to Indonesia, sustainably harvested, expertly woven and trimmed in Palm Wood by the skilled artisans at our company-owned factory in Indonesia. The custom bath caddy, crafted from the same richly-grained Palm Wood, serves as a luxurious invitation to revel in the serenity of the space.



Guest Room

We worked with the property to develop these unique, custom pieces for the Asian inspired guest suites. Their graceful forms, clean designs and exquisite craftsmanship elevate the guest experience and form lasting impressions.



The Setai, Miami Beach

Working with the luxe textures and deep brown tones of Palm Wood and woven Pandan, we created sophisticated room and bath accessories in keeping with the property's Far Eastern design aesthetic and the Asian traditions of simplicity and elegance.





The Tower at The Boca Raton

We worked with the team at this iconic property to develop accessories with a contemporary, coastal vibe. Our Natural Mendong with Bamboo trim evokes an effortlessly residential feel and contributes to the casual, yet luxurious sensibility of The Tower guestrooms.



Our Natural Mendong material is crafted from Mendong grass, which is sustainably grown and harvested, and then hand loomed by the skilled artisans at our company-owned factory in Indonesia. Trimmed in Bamboo, these pieces serve as elegant, organic touchpoints well suited for the Tower's breezy, waterfront setting.





The Cloister at The Boca Raton

This iconic landmark, the original hotel building at the property, features grand architecture and rich history dating back to 1926. Our Natural Pandan accessories with Maroon trim accent the classic styling and modern furnishings, and contribute to the sophisticated and casually elegant feel of the newly transformed space.



Our Pandan finish is crafted from the Pandan leaf, a completely renewable and sustainably harvested resource indigenous to Indonesia. Skilled artisans at our company-owned factory in Indonesia weave the Pandan by hand, applying the vibrant maroon Leather Match trim to create the unique pieces we developed specifically for The Cloister accommodations.



Four Seasons, Mauritius



We worked with the team at the property to create accessories with an organic, luxurious sensibility. We developed this custom Broadweave Mendong with Sungkai trim finish to add textural elements and contrasting tones that complement the bathroom décor and surrounding outdoor scenery, which is so much a part of the space.



The Ritz-Carlton, Aruba



The Ritz-Carlton, Aruba chose our Pearl White Leather Match bath accessories for their 5-star property designed to reflect the vibrant energy and relaxed charm of the island. Our pieces evoke indulgence, with their subtle sheen and exquisite craftsmanship, enhancing the sense of luxurious comfort for which the property is known.





Pendry Manhattan West

Pendry offers guests an airy, relaxed version of New York and its timeless sophistication. The clean lines and crisp elegance of our Wave Textured Leather Match accessories work beautifully in these stunning interiors, punctuating the warm, contemporary design and understated, California-inspired take on progressive luxury.



Guest Room & Bath

Our Wave Textured Leather Match is available in any color, included single tone (as pictured) or tone-on-tone. As a signature Via Motif collection, we hold stock of selected pieces at our warehouse in California, often allowing for "quick ship" delivery.





ette hotels

As an emerging brand, ette hotels is focused on ensuring that every single design element has meaning and purpose, conveying its identity and enhancing the guest experience. We developed these custom Lacquer and Leather Match accessories inspired by the brand's fresh style and crisp, artful, vibe.



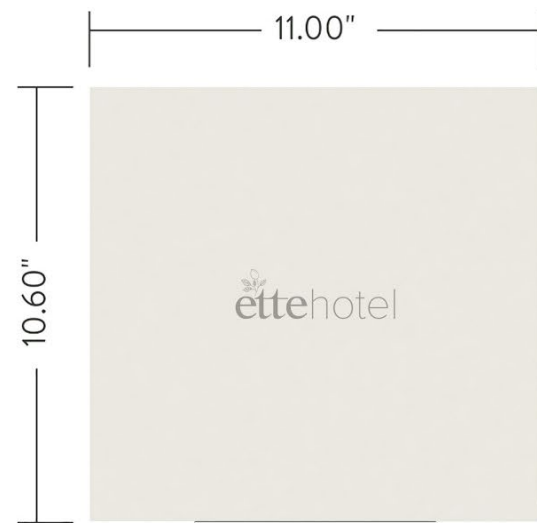
The lemon tree is an important symbol of ette's brand identity, symbolizing love, light and fortune, and evoking joy, optimism and positive energy. We incorporated this image into select accessories, allowing our pieces to help narrate ette's unique story.

Guest Bath



Guest Room

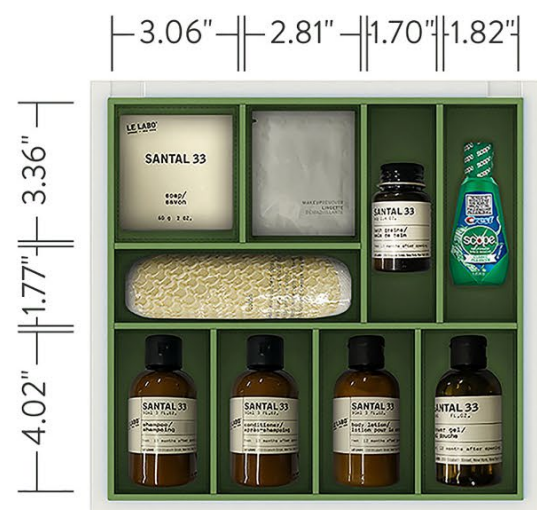




plan



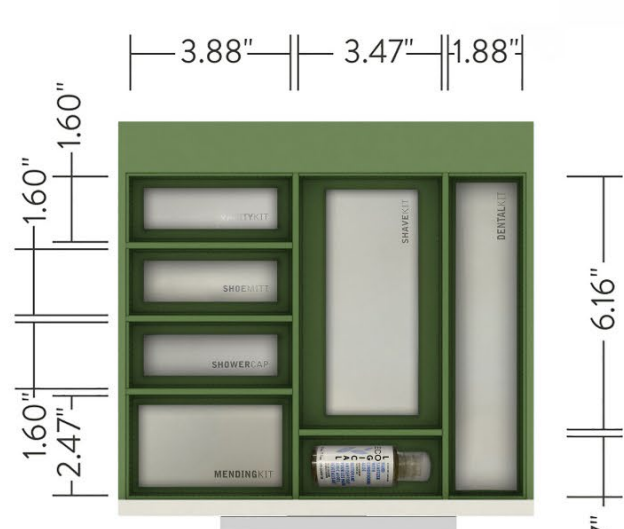
front elevation



detail divider box



top elevation



detail divider box drawer

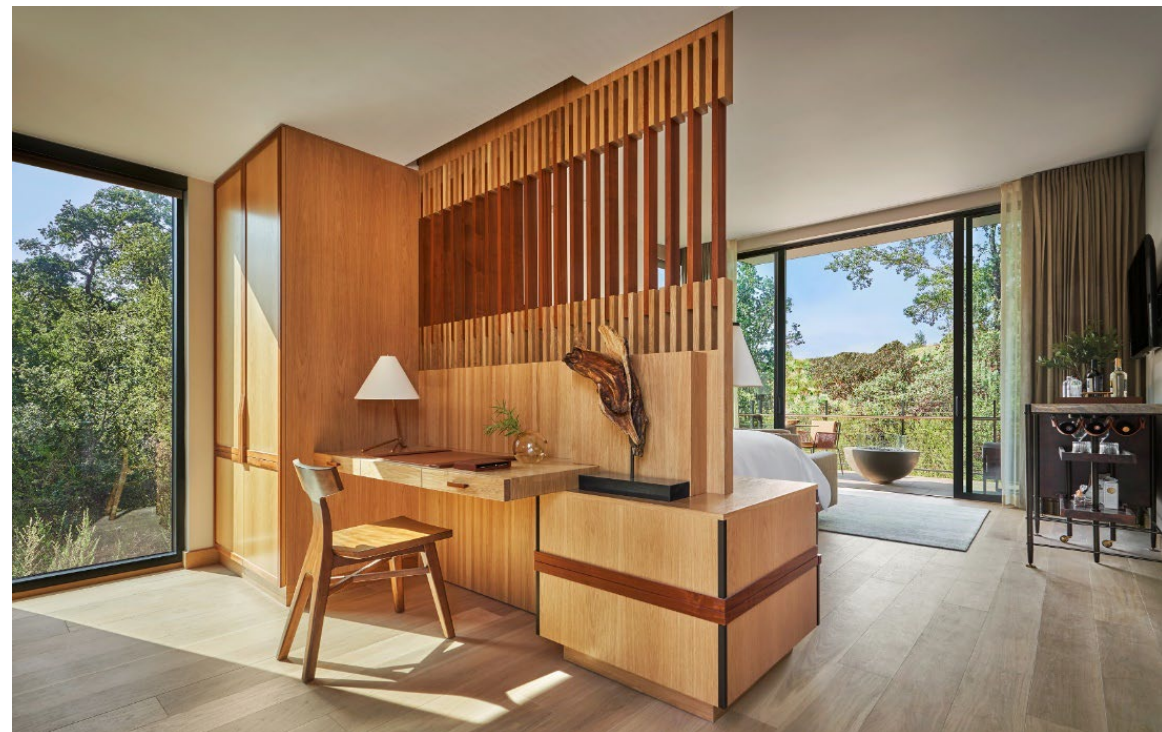


illustration



Montage Healdsburg

To complement the contemporary aesthetic and environmentally conscious design of this transformative hideaway in the Sonoma wine country, we created guest room and bath accessories hand crafted in earthy, neutral tones in a mix of rich and unique textures.



Guest Bath

Combining materials and finishes across our many collections enhances the boutique, one-of-a-kind essence of Montage Healdsburg. Materials such as wood, woven Mendong grass and black sand resin contribute to the organic, luxurious warmth and charm of the property.



Guest Room

We worked with the property to develop a custom Faux Shagreen finish in a warm brown that compliments the case goods and in-room woodwork. Our Faux Shagreen finish is not only beautiful, but it offers incredible design flexibility (available in any color, including tone-on-tone options) and value as well.

